



VACCICheck®

In-Clinic Titer Test to

Validate Your Patients Protection

WSAVA and AHAA vaccination guidelines recommend the use of titer tests in the following cases:

- Determining whether a puppy/kitten has responded to vaccination.
- Titer Test INSTEAD of automatic triennial core revaccination for adult dogs/cats.
- Testing of newly adopted adult dogs/cats of unknown vaccination history.
- Management of outbreaks in shelters.

Determines dog and cat antibody titer to:

Canine

- Infectious Hepatitis (ICH)
- Parvovirus (CPV)
- Distemper (CDV)

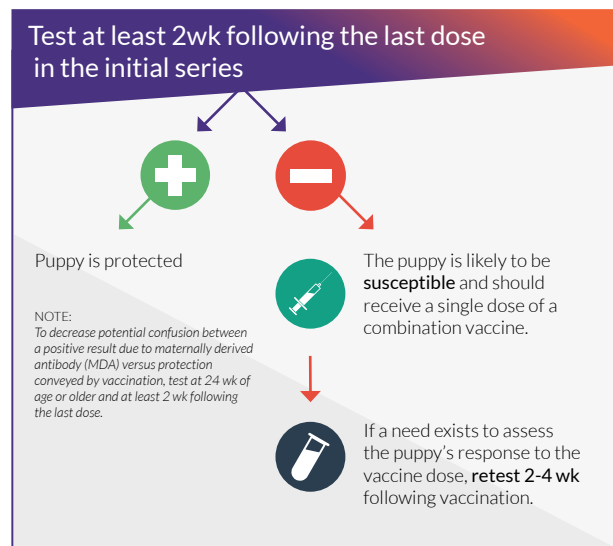
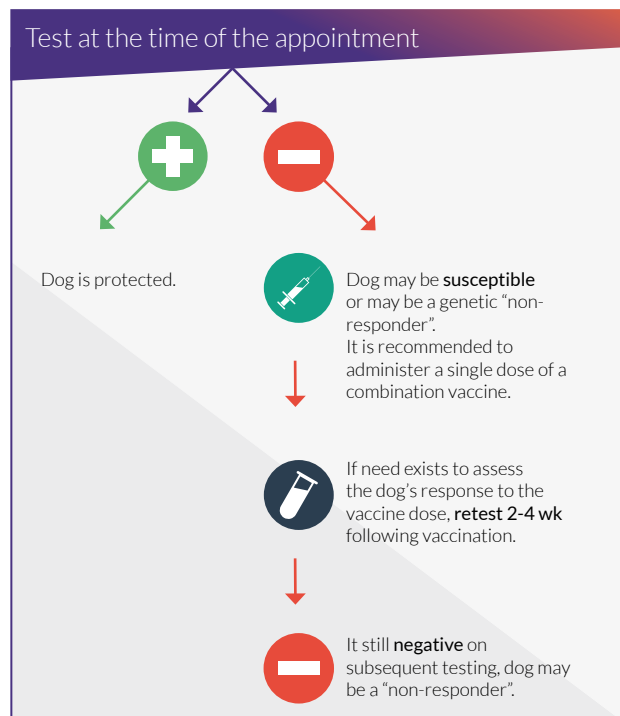
Feline

- Panleukopenia (FPLV)
- Herpes Virus (FHV)
- Calici Virus (FCV)

Excerpts from AAHA Vaccination Guidelines for two major titer testing indications*:

To assess the immunity when there is a prior vaccination history in an adult dog but the dog is due (or is overdue) for a scheduled booster.

To assess the immunity following completion of the initial vaccination series in puppies >24 wk of age.



*Source: AAHA Canine Vaccination Guidelines Revised 2017

VACCICheck®

- Provides *semi quantitative serological results* for the three core vaccines.
- Checks these three vaccines in *one test in the veterinary clinic or lab.*
- Supplies *results within 23 minutes.*
- *Does not require a lab* or lab technician to perform the test.

Name	Cat .No.	No. of Tests	Cat .No.	No. of Tests
Feline VacciCheck (FPLV, FHV, FCV)	50FVW201	12	50FVW110	120
Canine VacciCheck (ICH, CPV, CDV)	50CWV201	12	50CWV110	120



Biogal Galed Labs Acs Ltd.
www.biogal.com

Biogal Galed Labs
offers a complete customer service:
Kibbutz Galed, 1924000, Israel
Phone. +972 (0)4 9898605
Fax. +972 (0)4 9898690
Mail. info@biogal.com