

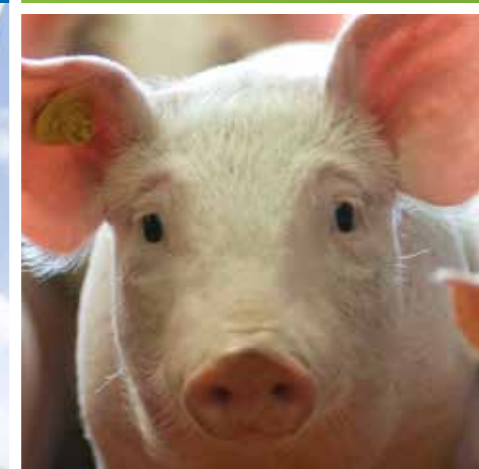


*Progress
is in our genes*



*Every
piglet has
its specific
needs*

**Romelko[®]
has balanced
premium
feeds**



IROMELKO® PREMIUM FEEDS

IN EVERY STAGE IN THE DEVELOPMENT, THE NUTRITIONAL REQUIREMENTS OF YOUR PIGLETS ARE DIFFERENT. THEREFORE WE DEVELOPED THE ROMELKO CONCEPT. WITH THIS CONCEPT WE ARE ABLE TO GIVE YOUR PIGLETS EXACTLY WHAT THEY NEED IN EVERY STAGE OF THEIR DEVELOPMENT. THE ROMELKO FEEDS HELP THE PIGLETS PASS THE WEANING PERIOD SMOOTHLY AND HEALTHY AND PREPARE THEM FOR REGULAR PIGLET FEED.

The feed intake of the piglet determines which feed must be provided at what stage. Romelko is a wide range of premium feeds and therefore will always provide the feed that is best for piglets of every age and in every specific situation. Romelko premium feeds are produced in our dedicated factory.

A COMPLETE RANGE OF PRODUCTS FOR EVERY SITUATION

Number 1 feed

These feeds are developed for motherless piglets and as supplementation to sow milk.

These products provide extra nutrients besides or instead of sow milk and are used in the farrowing house.

Key points

- ▶ Supplementation to or replacement of sow milk
- ▶ Learning to eat
- ▶ Stimulates extra growth

All number 1 feeds are available in milk, meal or pellets for optimal results.

More information about Romelko Milk Replacers? Ask your specialist for the special brochure.

USAGE PREMIUM FEED DE HEUS					
Feed intake		Feed range			
Low feed intake		Stimulate feed intake			
Average/high feed intake		Make advantage of feed intake			
Good feed intake but health problems		Guard feed intake and gut health			
	Age*	Stimulate	Comfort	Prevent	
		Sow milk, Nurse milk and Nurse feed			
Romelko Premium	1	0-21			
	2	4-30	X	X	
	3	21-42	X	X	X
	4	30-55	X	X	X
Regular	5	42-70	X	X	X
	6	55-84	X	X	X

Number 2 feed

These feeds are developed for use in the farrowing house and can be used until a few days after weaning.

Key points

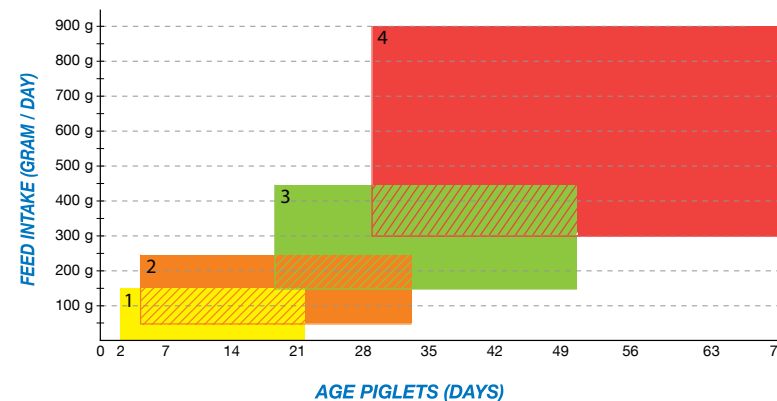
- ▶ As addition to sow milk
- ▶ Learning to eat
- ▶ Learning to digest
- ▶ Stimulates extra growth
- ▶ Learning to drink water from a nipple
- ▶ Promotes feed intake around weaning

Number 3 feed

Number 3 feeds can be given from a few days before or a few days after weaning until a feed intake of 350-450 grams. These feeds help piglets to make the transition from sow milk to feed.

Key points

- ▶ Learning to digest
- ▶ Transition from sow milk to dry feed
- ▶ Optimizing feed intake
- ▶ Improving gut health



Number 4 feed

Number 4 feeds can be used after weaning for an optimal growing period. They are normally given after the number 3 feeds but if piglets are eating very well these feeds are also suitable after a number 1 or 2 feed.

Key points

- ▶ Stimulate extra growth
- ▶ Stimulating health
- ▶ Optimizing feed intake
- ▶ Transition from number 3 feed

Number 5-6 feed

After a good start with the premium products of Romelko from our dedicated factory, economic result can be optimised with feeds from the regular factory. These feeds match perfectly with the Romelko products to safeguard an optimal transition from premium to regular piglet feed.

3 LINES: STIMULATE, COMFORT, PREVENT

Within the number 2,3,4 feeds we developed 3 lines as well. These feed lines are composed to lead to an optimal performance. For every situation they provide a suitable feed intake and growth.

Stimulate line

- ▶ Composition of ingredients stimulate higher intake
- ▶ Nutritional values result in a higher growth
- ▶ For piglets with a low feed intake or growth
- ▶ For piglets that need an extra stimulance right after weaning
- ▶ Intake on very young age
- ▶ High intake in the farrowing house
- ▶ Stimulate intake after weaning on very young age
- ▶ Stimulate feed intake during growth period and stimulate growth when piglets are fostered or reared motherless



Comfort line

- ▶ Composition of ingredients stimulate an optimal utilization of the feed intake
- ▶ Nutritional values result in a high growth
- ▶ For piglets with a normal to high feed intake
- ▶ For a good intake and extra growth in the farrowing house
- ▶ For a perfect preparation on the weaning process
- ▶ To prevent good eating piglets from intestinal health disorders
- ▶ For satisfied pigs with high growth
- ▶ To avoid aggression

Prevent line

- ▶ Composition of ingredients prevents piglets from overeating
- ▶ Nutritional values improve health
- ▶ For piglets with a normal to high feed intake with health problems
- ▶ Keep the balance between feed intake and intestinal health
- ▶ Prevents bacterial overgrowth
- ▶ Prevents good eating piglets from diarrhea

FEED INTAKE NORMS: HOW TO USE THE ROMELKO FEEDS

CUMMULATIVE FEED INTAKE BEFORE WEANING*					
Weaning 21 days			Weaning 28 days		
Days	Minimum	Optimum	Days	Minimum	Optimum
5-21	150	300	5-28	300	500
CUMMULATIVE FEED INTAKE AFTER WEANING*					
Weaning 21 days			Weaning 28 days		
Days	Minimum	Optimum	Days	Minimum	Optimum
0 - 4	400	500	0 - 3	400	500
0 - 7	1,250	1,750	0 - 7	1,250	1,750

* Cumulative feed intake is total intake in grams during total period mentioned

WATER INTAKE			
8 - 10 % of body weight daily intake, from weaning until 25 kg			
	STIMULATE	COMFORT	PREVENT
Feed intake	++++	+++	+
Growth	++++	+++	++
Improving gut health	+	+++	++++